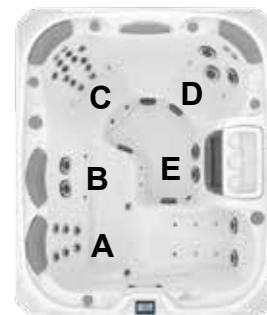


# Sundance® Spas 880 Marin®

## Specifications

<b>Dimensions:</b>	76" x 91" x 34" (194 cm x 231 cm x 87 cm)
<b>Seating Capacity:</b>	4-5 Adults
<b>Dry Weight:</b>	838 lbs (381 kg)
<b>Filled Weight (Average Fill)**:</b>	3,465 lbs (1,572 kg)
<b>Water Capacity (Average Fill):</b>	315 US Gal (1,193 Liters)
<b>Controls:</b>	880 Touchscreen Control, Displays Temperature, Time, Cycles and Jet/Air System Control. Offers Customizing of Filtration Cycles, Lighting, Water Temperature Setting and other features
<b>Water Delivery:</b>	2 TheraMax High-Flow Pumps and 8-Hour Dynamic Flow Circulation System
<b>Pump 1:</b>	North America (60 Hz): 1-Speed/2.5 HP Continuous, 11.3A Max., 56 Frame <b>Export (50 Hz): 1-Speed/2.0 HP Continuous, 7.0A Max.</b>
<b>Pump 2:</b>	North America (60 Hz): 1-Speed/2.5 HP Continuous, 11.3A Max., 56 Frame <b>Export (50 Hz): 1-Speed/2.0 HP Continuous, 7.0A Max.</b>
<b>Pump 3:</b>	High Output Dynamic Flow, 24-Hour programmable, factory default set to 8-Hour Filter/ Circulation Pump (35 gpm) Programmable for Daily Start Time and Duration
<b>Total Hydrojets:</b>	<b>45</b>
<b>Seat A Jets:</b>	6 Fluidix Reflex, 2 Vortex, 2 Fluidix Nex, 6 Focus-Relief®
<b>Seat B Jets:</b>	2 Vortex, 4 Focus-Relief
<b>Seat C Jets:</b>	2 Fluidix Nex, 12 Fluidix ST, 2 Accu-Pressure
<b>Seat D Jets:</b>	2 Fluidix Nex, 2 Fluidix Intelli-Jet, 1 Fluidix PT
<b>Footwell Jets (E):</b>	2 Vortex
<b>Air Blower:</b>	High-Efficiency, 1-Speed
<b>Aromatherapy Delivery:</b>	4 Air Injector Jets with Quiet High Speed Air Pump
<b>Air Controls/Massage Selectors:</b>	4/1 (Standard air control with LED lights and massage selector with LED lights)
<b>Filter:</b>	MicroClean® Ultra II Filtration System, 130 ft² (2 interlocking cartridge filters)
<b>Water Treatment:</b>	Dynamic Flow Circulation System; Factory installed ClearRay Active Oxygen® System <b>Export: ClearRay Active Oxygen® System</b>
<b>Lighting:</b>	Multi-Colored LED Lighting System (1 Waterfall, 1 Underwater, 4 Air controls, 1 Massage Selector); Exterior lighting (white only)
<b>Skirt Cabinet (SunSide™):</b>	Windy Oak, Ironwood and Flint Gray
<b>Shell Colors:</b>	Platinum, Celestite, Morning Mist, Midnight, Travertine, Monaco (while quantities last)
<b>Handrails:</b>	1 Integral
<b>Headrests:</b>	Four, 1-Piece Gray
<b>Heater:</b>	North America (60 Hz): Hi Flow 5.5 kW with Titanium Element <b>Export (50 Hz): Hi Flow 2.7 kW with Titanium Element</b>
<b>Electrical Requirements:</b>	North America (60 Hz): 240 VAC@40A, 50A or 60A; <b>Export (50 Hz): 230-240 VAC@1x32A, 1x16A/1x20A, or 3x16A (see manual for more configurations); or Suitably Rated Circuit Breaker to Comply with Local Electrical Regulations. Certain Countries May Require 2 Power Inputs; Two GFCI/RCD Breakers are Required for This Configuration.</b>
<b>Limited Warranty*:</b>	North America (60 Hz): 10 Years Shell, 7 Years Shell Surface, 5 Years Plumbing Component Leaks, 5 Years Equipment and Controls, 5 Years Cabinet, 5 Years Jets, 2 Years Lights, 1 Year Stereo <b>Export (50 Hz): 10 Years Shell, 7 Years Shell Surface, 5 Years Plumbing Component Leaks, 5 Years Equipment and Controls, 5 Years Cabinet, 5 Years Jets, 2 Years Lights, 2 Years Stereo</b>
<b>Waterfall Feature:</b>	Adjustable Flow Rate; Colored Lighting
<b>Audio System (Optional):</b>	Factory Installed BLUEWAVE® 2.0 Wireless Spa Stereo System with Auxiliary 3.5 mm headphone jack connection, Bluetooth® compatible, 2 premium speakers and a powered subwoofer
<b>Special Features (Standard):</b>	SmartTub® module <b>Export: SmartTub® module (optional)</b>
<b>Special Features (Optional):</b>	Inductive Charger

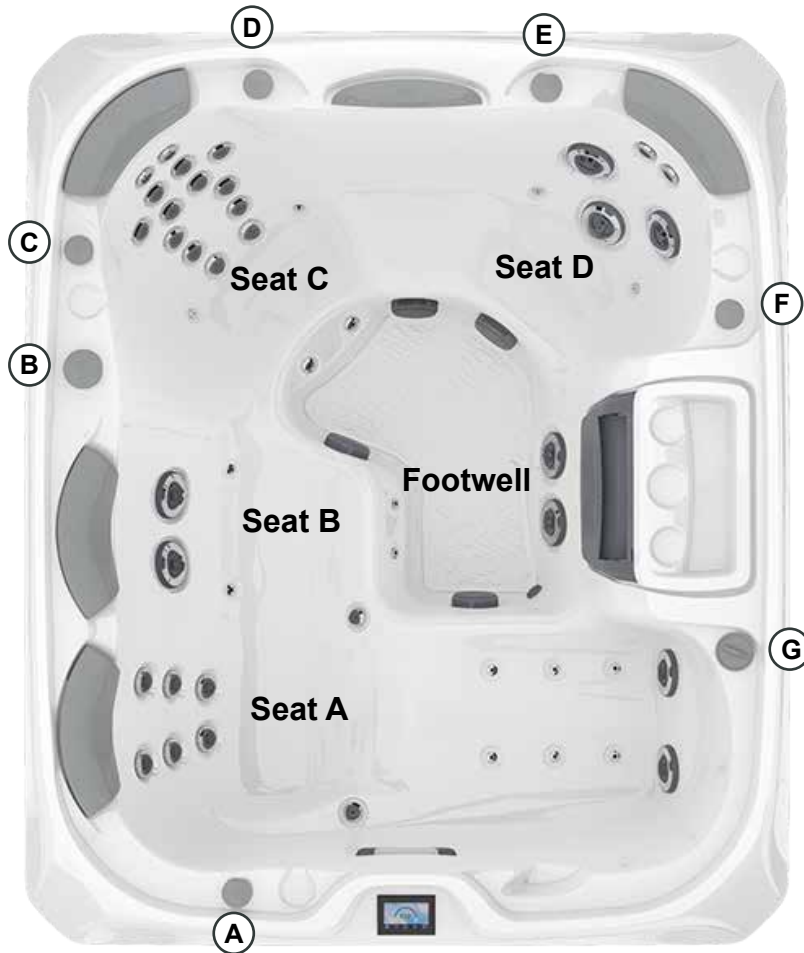


\*(See Warranty Document for Specific Details)

\*\*\*(See Important Safety Instructions for Specific Details)

# Sundance Spas 880 Marin

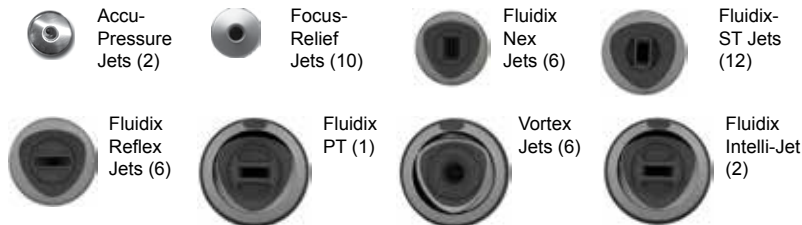
## Operation/Seat Depths



- (A)** Air Control - Activates Seat A Jets (6 Fluidix Reflex, 2 Fluidix Nex, 2 Vortex)
- (B)** Massage Selector [Pump 1] - Adjusts Massage Level Between Seat A Jets and Seat C Jets
- (C)** Air Control - Activates Upper Eight Seat C Jets (2 Fluidix Nex, 6 Fluidix ST)
- (D)** Air Control - Activates Lower Eight Seat C Jets (6 Fluidix-ST, 2- Accu-Pressure)
- (E)** Waterfall Selector [8-Hour Circ. Pump] - Controls Waterfall Output
- (F)** Air Control - Activates Seat B Jets (2 Vortex) + Seat D Jets (2 Fluidix Nex, 2 Fluidix Intelli-Jet, 1 Fluidix PT) + Footwell Jets (2 Vortex)
- (G)** Sunscent Dispenser

- Jets Pump 2: Seat B Jets + Seat D Jets + Footwell Jets are always on when this pump is running
- Focus-Relief Jets: Work with both the blower and Jets Pump 1 and Pump 2. The blower introduces air to the jet and the Jets Pump forces water through.

### 45 Total Jets



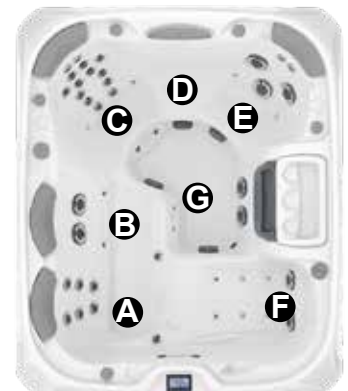
Spa Operation Subject To Change Without Notice

## SEAT DEPTHS

**A = 25.75" (65.41 cm)**  
**B = 24.50" (62.87 cm)**  
**C = 28.00" (71.12 cm)**  
**D = 22.00" (55.88 cm)**

**E = 25.00" (63.50 cm)**  
**F = 19.00" (66.04 cm)**  
**G = 30.00" (76.20 cm)**

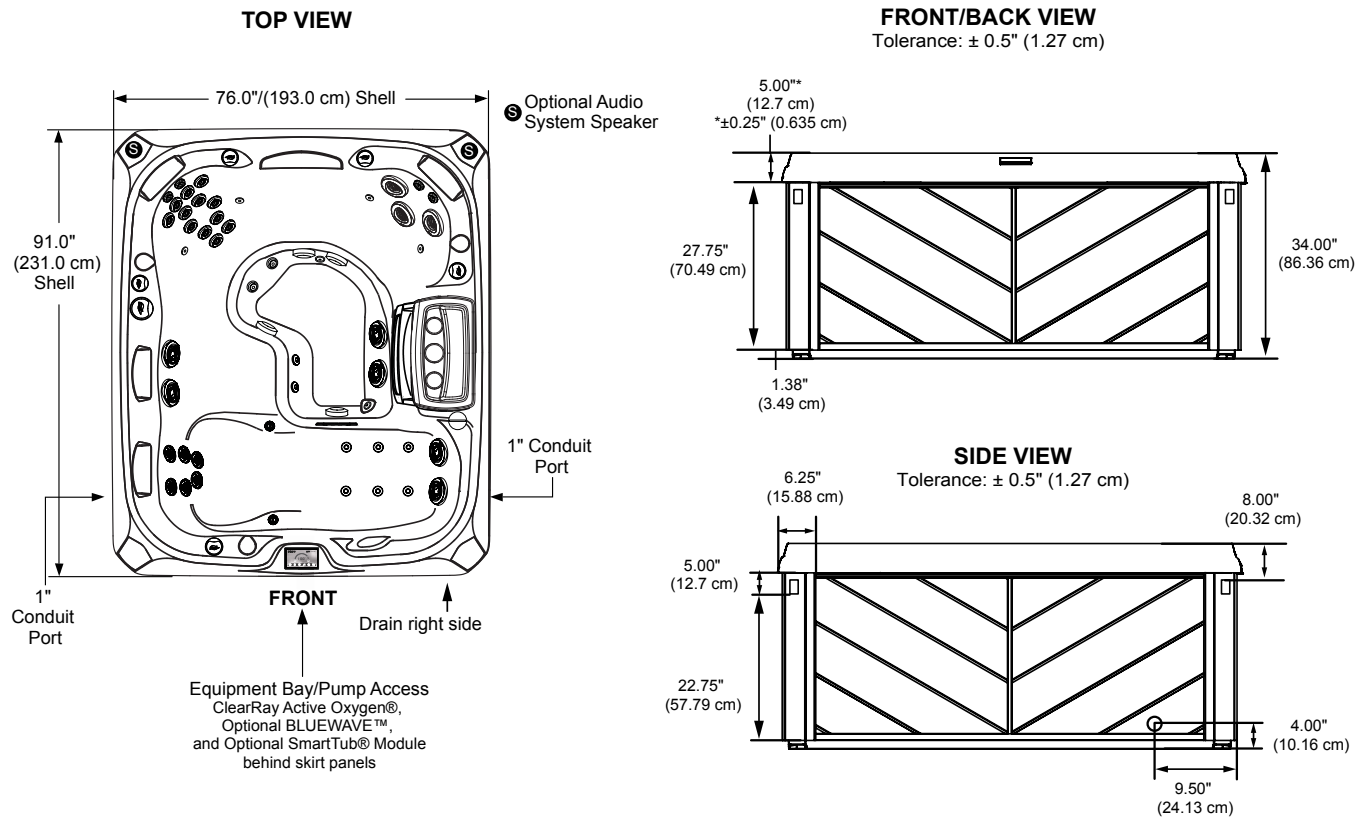
Listed dimensions represent distance from top of acrylic to lowest point in seat. **Tolerance  $\pm 0.5"$  (1.27 cm).**



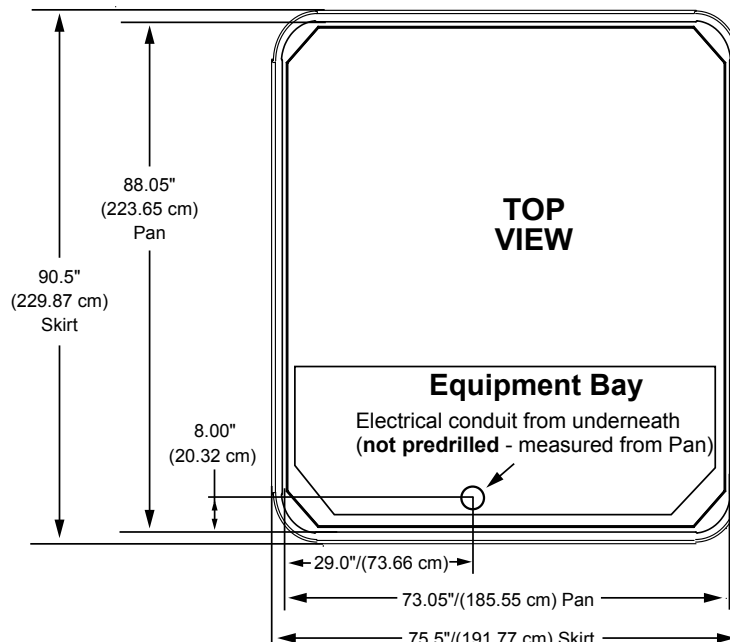
Dimensions/Specifications Subject To Change Without Notice

# Sundance Spas 880 Marin

## Portable Dimensions



**IMPORTANT! Always measure each hot tub for exact dimensions BEFORE designing its foundational support and/or decking.**



Dimensions/specifications subject to change without notice. Tolerance:  $\pm 0.5"$  (1.27 cm)

Dimensions/Specifications Subject To Change Without Notice